

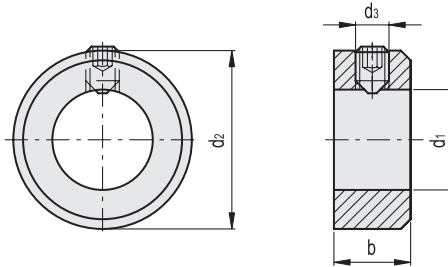
- 1
- 2
- 3
- 4
- 5
- 6
- 7
- 8
- 9
- 10
- 11
- 12
- 13
- 14
- 15
- 16
- 17
- 18

MATERIALE

Acciaio INOX AISI 303.

ESECUZIONE STANDARD

Fissaggio per mezzo di vite acciaio INOX, senza testa con cava esagonale.



INOX STAINLESS STEEL

Codice	Descrizione	d1 H8	d2	d3	bjs14	⚖
GN.30603	GN 705-5-E-NI	5	10	M3x4	6	3
GN.30607	GN 705-6-E-NI	6	12	M4x5	8	6
GN.30613	GN 705-7-E-NI	7	12	M4x5	8	8
GN.30617	GN 705-8-E-NI	8	16	M4x6	8	10
GN.30623	GN 705-9-E-NI	9	18	M5x8	10	15
GN.30627	GN 705-10-E-NI	10	20	M5x8	10	19
GN.30633	GN 705-11-E-NI	11	20	M5x8	10	18
GN.30637	GN 705-12-E-NI	12	22	M6x8	12	26
GN.30643	GN 705-13-E-NI	13	22	M6x8	12	26
GN.30647	GN 705-14-E-NI	14	25	M6x8	12	32
GN.30653	GN 705-15-E-NI	15	25	M6x8	12	30
GN.30657	GN 705-16-E-NI	16	28	M6x8	12	39
GN.30663	GN 705-18-E-NI	18	32	M6x8	14	60
GN.30667	GN 705-20-E-NI	20	32	M6x8	14	53
GN.30673	GN 705-22-E-NI	22	36	M6x10	14	69
GN.30677	GN 705-24-E-NI	24	40	M8x12	16	100
GN.30683	GN 705-25-E-NI	25	40	M8x10	16	96
GN.30687	GN 705-26-E-NI	26	40	M8x10	16	91
GN.30693	GN 705-28-E-NI	28	45	M8x12	16	123
GN.30697	GN 705-30-E-NI	30	45	M8x10	16	111
GN.30703	GN 705-32-E-NI	32	50	M8x12	16	145
GN.30707	GN 705-34-E-NI	34	50	M8x12	16	132
GN.30713	GN 705-35-E-NI	35	56	M8x12	16	187
GN.30717	GN 705-36-E-NI	36	56	M8x12	16	180
GN.30723	GN 705-38-E-NI	38	56	M8x12	16	166
GN.30727	GN 705-40-E-NI	40	63	M10x16	18	261
GN.30733	GN 705-42-E-NI	42	63	M10x16	18	289
GN.30737	GN 705-45-E-NI	45	70	M10x16	18	317
GN.30743	GN 705-48-E-NI	48	70	M10x16	18	373
GN.30747	GN 705-50-E-NI	50	80	M10x16	18	429